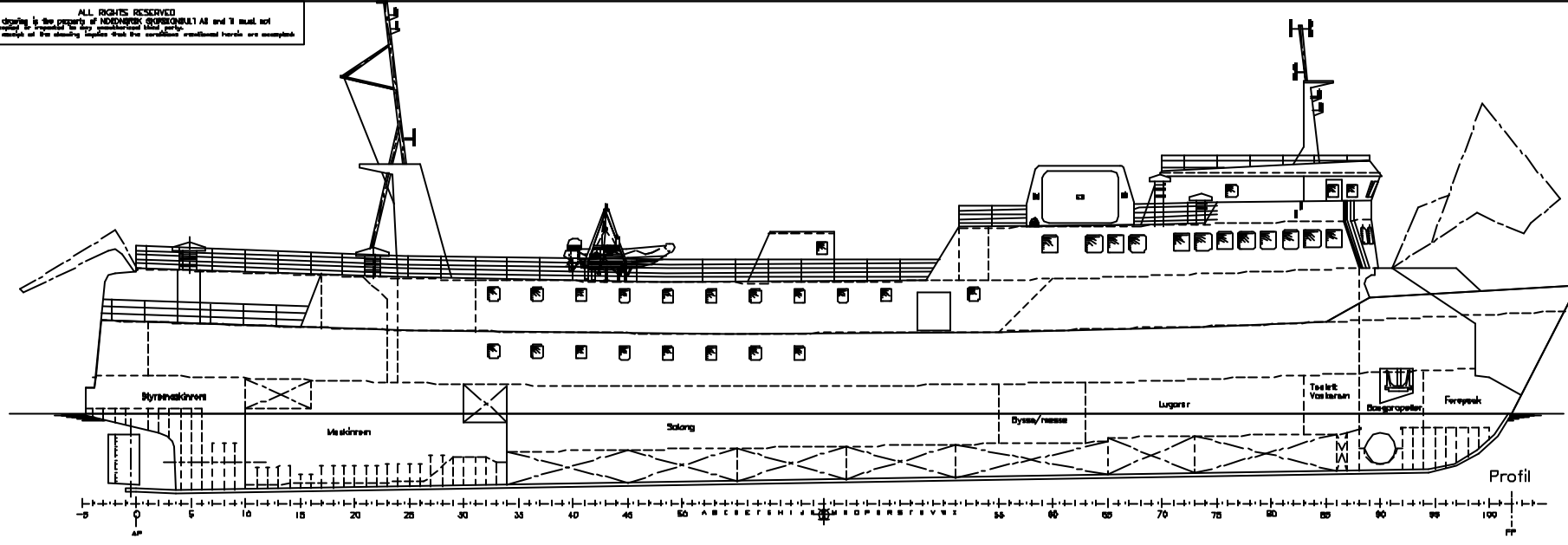
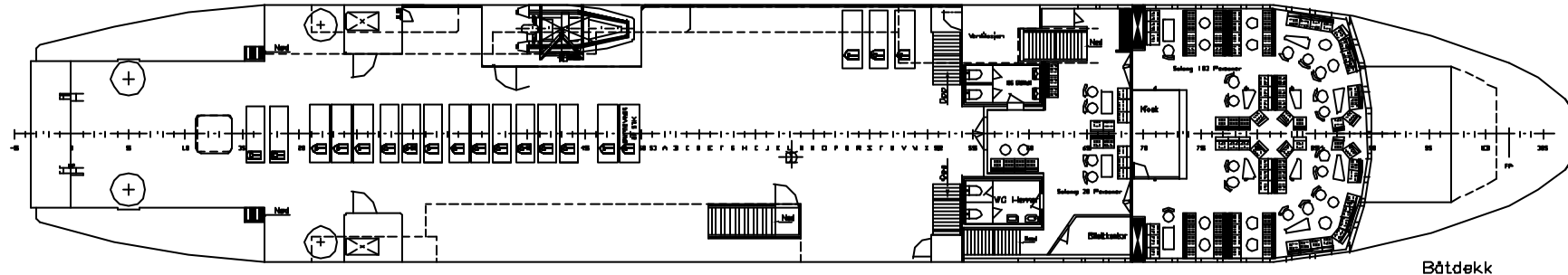


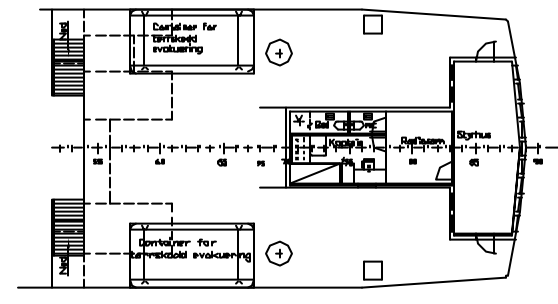
ALL RIGHTS RESERVED
 This drawing is the property of ANDREASSEN GROSSVÅRSLINJA AS and it must not
 be copied or reproduced in any way without the written consent of the company.
 The copyright of the drawing together with the consultant's professional liability are exempted.



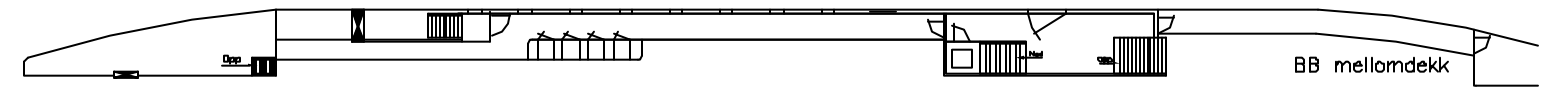
Profil



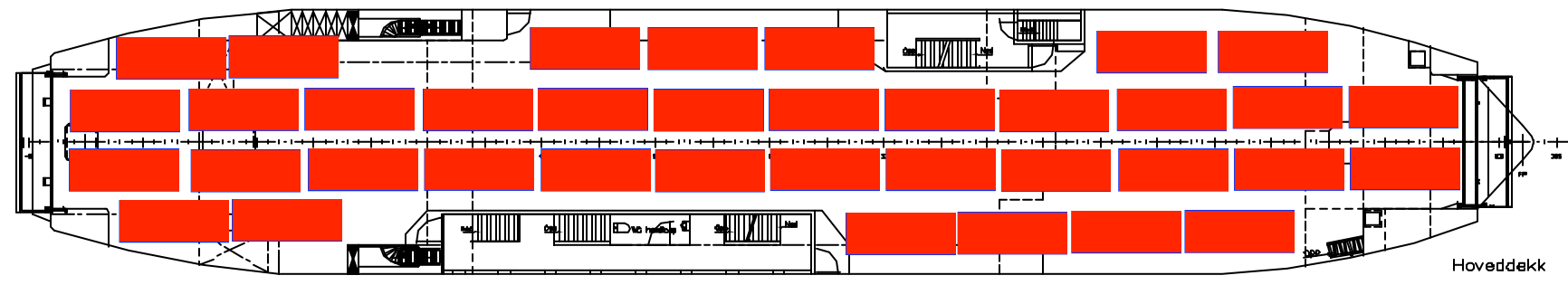
Båtdekk



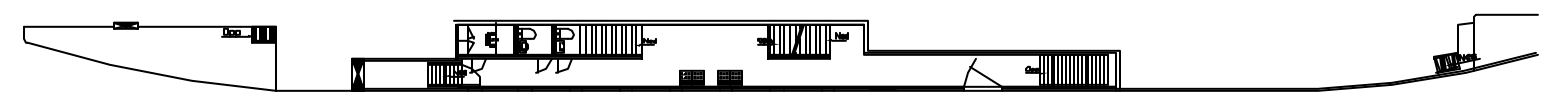
Brodekk



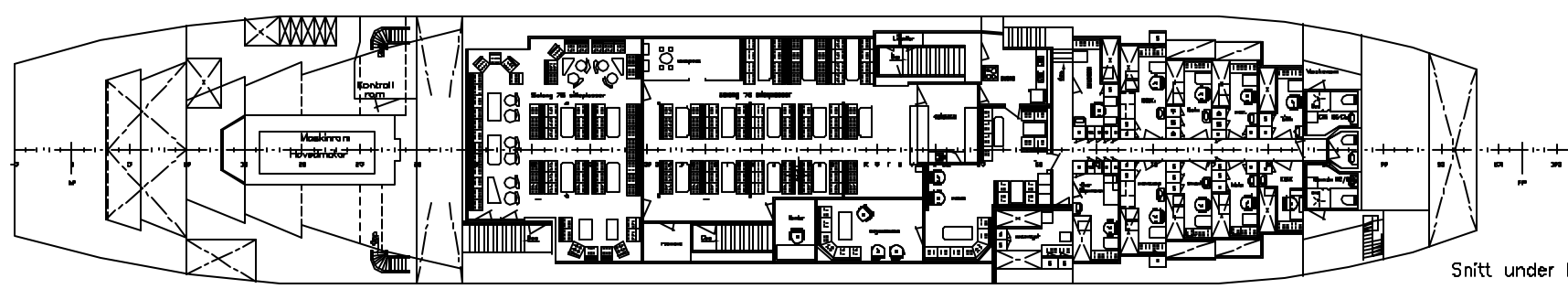
BB mellomdekk



Hoveddekk




St.B mellomdekk



Snitt under hoveddekk

HOVEDDIMENSJONER:
 Lengde over allt: 88,30 m
 Lengde mellom PP: 83,80 m
 Lengde Bildekk: 82,50 m
 Brekke på spant: 11,80 m
 Dybde 1. riss: 4,20 m
 Brutto tonnasje: 1677 tonn
 Netto tonnasje: 776 tonn
 Passasjerantall: 250 Personer
 + Mannskap 12 Pers.
 Sikkerhetsbemanning 8 Pers.
 Driftbemanning 10-12 Pers.
 Aksestrykk: 13 tonn på doble hjul
 Fri høyde: 4,5 m
 Ombygd til klasse: DnV +1A1- R15
 Biferge A.
 Skipskontrollens regler for,
 Fartsområde 4,
 Imo Nr. : 760495Z
 Byggedr: 1978, Balsnes Verft, Molde

Rev.	Descr./Rev.	Coast./Drawn	Date	Drawn/Sign.
	Date: 01.11.2002	BRU		
	Scale: 1:150		Approved	
	M/F "VÅGAN" - LIGY			
	GENERALARRANGEMENT			
	Reference:			



1249 100 001 - 1 of 1